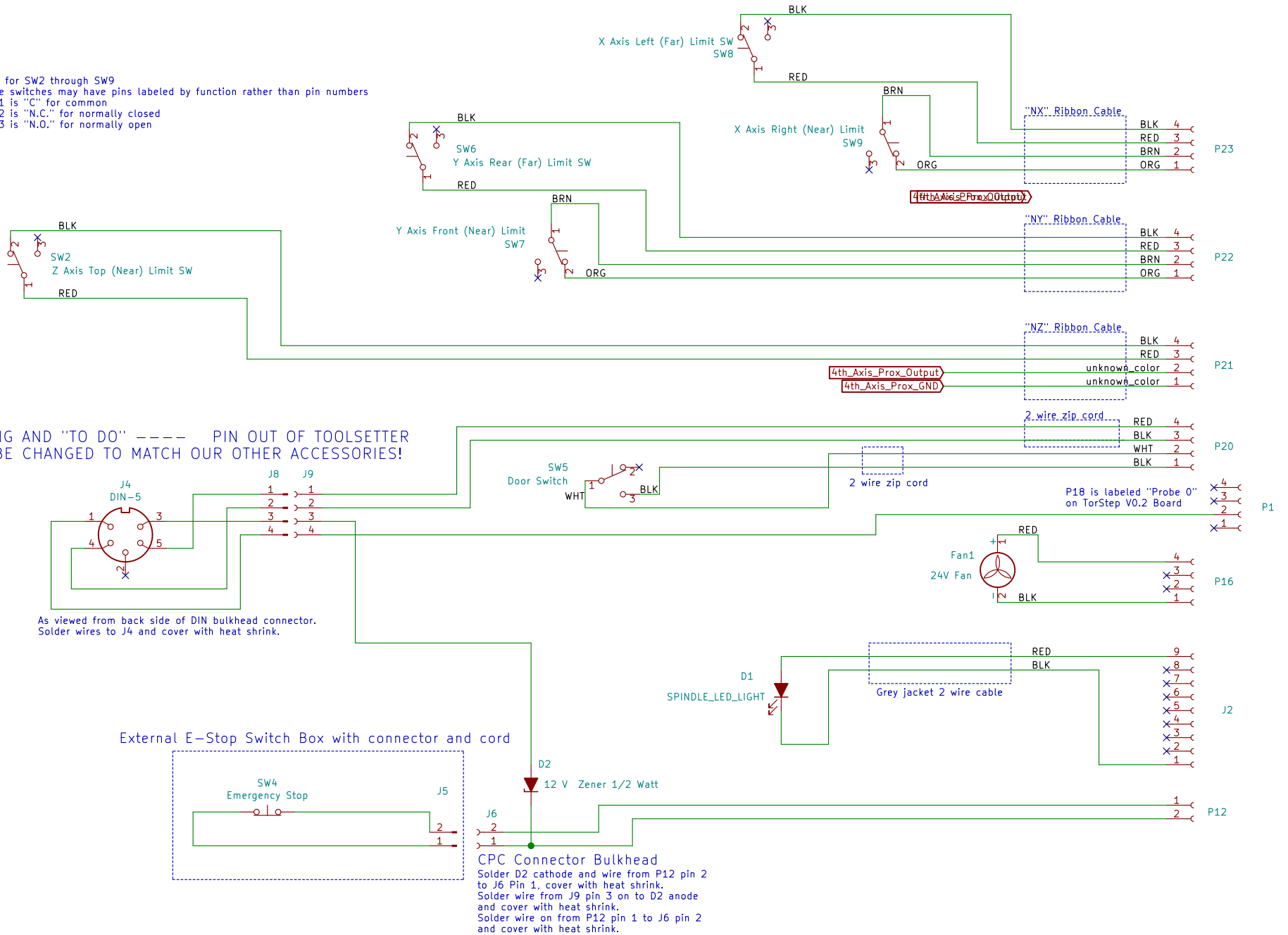
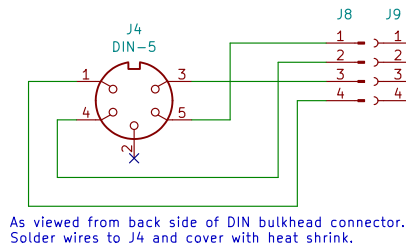


Note for SW2 through SW9  
 Some switches may have pins labeled by function rather than pin numbers  
 Pin 1 is "C" for common  
 Pin 2 is "N.C." for normally closed  
 Pin 3 is "N.O." for normally open



WARNING AND "TO DO" ----- PIN OUT OF TOOLSETTER MUST BE CHANGED TO MATCH OUR OTHER ACCESSORIES!



CPC Connector Bulkhead  
 Solder D2 cathode and wire from P12 pin 2 to J6 Pin 1, cover with heat shrink.  
 Solder wire from J9 pin 3 on to D2 anode and cover with heat shrink.  
 Solder wire on from P12 pin 1 to J6 pin 2 and cover with heat shrink.

